



Million Dollar Monday Update

January 2nd, 2012

Were Rockin' Around the Clock To Million

with..15 Red Jackets, 7 Team Leaders and 3 DIQ's!!



\$50,000
\$49,000
\$48,000
\$47,000
\$46,000
\$45,000
\$44,000
\$43,000
\$42,000
\$41,000
\$40,000
\$39,000
\$38,000
\$37,000
\$36,000
\$35,000
\$34,000
\$33,000
\$32,000
\$31,000
\$30,000
\$29,000
\$28,000
\$27,000
\$26,000
\$25,000
\$24,000
\$23,000
\$22,000
\$21,000
\$20,000
\$19,000
\$18,000
\$17,000
\$16,000
\$15,000
\$14,000
\$13,000
\$12,000
\$11,000
\$10,000
\$9,000
\$8,000
\$7,000
\$6,000
\$5,000
\$4,000
\$3,000
\$2,000
\$1,000

DECEMBER

When you complete one of the following you will get to attend NSD Tammy Crayk's monthly X-treme team celebration / education event!!

1. Complete **ON TARGET** car production the previous month.
2. Complete **DIQ** production the previous month.
3. Complete 30 **faces** (18 and older), do a \$600 wholesale reorder and do 5 qualified interviews.

AND.... When you complete 1 of the above requirements AND do 10 total *qualified director interviews OR get 2 new **qualified recruits you will earn the X-treme necklace.

The Director or Consultant with the highest personal team production each month will win The X-TREME Bracelet!!!

* A qualified interview is an interview with your director or your guest attending a director/ NSD marketing event.
 ** The qualified recruits must sign their agreement and place their \$600 qualified order in the same calendar month.

Rockin' Around The Clock to Inner Circle!! July 2011 - June 2012

ARE YOU... **READY RIGHT NOW** TO MOVE UP THE CAREER PATH??

Inner Circle Leadership Day with NSD Tammy Crayk

Date: Saturday, February 4, 2012
 Time: Training and dinner (1-6pm)
 FUN!! Bunko and girlfriend time (6-8pm)
 Place: Tammy Crayk's House
 7295 Pinebrook Road, Park City, UT
 Cost: \$20 per person (includes dinner and workshop materials)

QUALIFICATIONS:

- All red jackets through DIQ's by January 15, 2012 are invited to attend (must have a minimum of 3 active team members on January 15)
- Team Leaders thru DIQ's are invited to stay and play BUNKO with Tammy and all of the winners for girlfriend time and crazy fun prizes. (Must have 5 or more active team members on January 15)
- Complete CAR and/or DIQ PRODUCTION in December to attend for FREE and be a featured teacher on Leadership Day!!

**Registration will open on January 1st.
 **No refunds!

LOOK WHO CALLED THE HOTLINE WITH THEIR HOT NEWS!!

ASHELY CHADWICK- Sold \$10 in reorders this week AND did an our of power and got one new booking AND held a \$117 Skin Care Class with one new career chat and one new booking. EXCELLENT!!

DENISE WINTERS- Held a \$151 Double Facial. EXCELLENT!!

be a **STAR**

We are hitting 25 STARS this quarter!!!
 What prize will YOU choose?

25 Stars by March 15th

Pamela Kahn... \$1268 to go!!
 Ashley Chadwick... \$1343 to go!!
 Tricia Schlack... \$1349 to go!!



Receive this beautiful pin and your first Star for being a Star Consultant this quarter. Receive additional Stars for every time you're a Star Consultant!!

Who will be the next in **RED** All you need is three active team members!!

 Barbara Parr 4 active-6 total	 Kaylee Haywood 3 active-3 total	 CariAnn VanBeekum 4 active-6 total	 Cindy Christman 1 active-4 total	 Anne Lund 7 active-12 total	 Kelly Hahn 6 active-8 total	 Ashley Chadwick 8 active-14 total	 Cathy Connelly 16 active-27 total	 Christy Flater CAR DRIVER!	 Lindsey Fenstermaker CAR DRIVER!
 Connie Harmon 3 active-12 total	 Jennifer Robbins 5 active-8 total								

Sales

"BEE"the best

Seminar 2011-2012

"It is in the moments of decision that your destiny is shaped". Anthony Robbins

1	Connie Harmon	\$13,175
2	Ashley Chadwick	\$10,249
3	Kim Sabourin	\$9,539
4	Catherine Connelly	\$8,618
5	Denise Winters	\$6,970
6	Sydney Shiba	\$6,597
7	Meredith McBride	\$5,479
8	Kaylee Haywood	\$4,759
9	Becky Moormann	\$4,327
10	Mary Taylor	\$3,769
11	Carolyn Wingeier	\$3,515
12	Misti Couvrette	\$3,443
13	Jennifer Robbins	\$3,357
14	Paul Reeder	\$3,215
15	Kelly Hahn	\$2,999
16	Anne Lund	\$2,902
17	Barbara Parr	\$2,832
18	Melani Gates	\$2,533
19	Rebecca Bornholdt	\$2,503
20	Donna Parrish	\$2,323



-Earn this Bee Bracelet when you add your first *Qualified New Personal Recruit for this Seminar Year!!

-Earn your Bee Charms for completing 10 or more **Director Approved Career Chats in a calendar month.

-Earn your Crystal Bee Charms for each *Qualified New Personal Recruit you add to your team during the 2011-2012 Seminar Year.

Aim for 24 or MORE Crystal Bee Charms which will put you in the National Court of Sharing where you will earn your GENUINE DIAMOND BEE pin, ring or bracelet !!!

- * A Qualified New personal recruit = a personal recruit (2011-2012) who orders at least \$600 in wholesale product in the same year
- ** A Director approved career chat = an interview with your director, marketing event, observing Tammy's marketing DVD, listening to Tammy's recorded marketing call (641) 715-3900 Access code 687634 (Your guest MUST also allow your director to FOLLOWUP with her in order to make the interview qualified)

LEADERSHIP

Color Sampler Cards	Jet Oval Drop Earrings	Jet Bead Hematite Bracelet	Jet Bead Necklace Set	Pick From Kim's Ring Box	Black Diamond Chandelier Earrings	Black Diamond Hematite Ring
\$200 WHOLESALE & 25 ITEMS SOLD	STAR DIVA \$400 WHOLESALE & 30 ITEMS SOLD	DOUBLE STAR DIVA \$600 WHOLESALE & 75 ITEMS SOLD	TRIPLE STAR DIVA \$1000 WHOLESALE & 100 ITEMS SOLD	5 Guests to Marketing	10 Guests to Marketing	15 Guests to Marketing

Sharing

1	Kim Sabourin	3	\$400
2	Cathy Connelly	1	\$320
3	Kaylee Haywood	3	\$169
4	Connie Harmon	3	\$149
5	Jennifer Robbins	1	\$84
6	Shari Coulter	1	\$57
7	Julia Miola	1	\$32



Coordinating bangle bracelets

way to GROW

Each month in which an Independent Sales Director achieves her Way to Grow goal, **each contributing unit member** will receive a glamorous bangle bracelet for every new active™ personal team member she adds! The bracelets come in three coordinating designs that can be worn alone or together for maximum impact. For example, if a unit member adds three new active™ personal team members in December, and the unit has achieved the December Way to Grow goal, she'll receive all three bracelets. Add more and receive more bracelets! *Note: Bracelets will be earned and mailed in this consecutive order: 1) silver bangle 2) rose-gold bangle 3) yellow-gold bangle. The pattern will repeat as more bracelets are earned.*

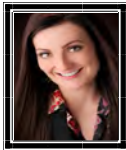
Congratulations NOVEMBER Extreme Team Winners!!



Ashley Chadwick
30 Faces \$1006 wholesale
6 interviews



Cathy Connelly
31 Faces \$1970 wholesale
13 Interviews



Kim Sabourin
30 Faces \$904 wholesale
5 interviews



Connie Harmon
31 Faces \$1080 wholesale
8 interviews

Weekly Challenge:

Listen to Power Player Call on Booking
712-432-1085 access code 615924#

Call me at 446-6404 by Sunday at midnight to tell me you did it and you'll get a prize!

HOTLINE NUMBER:

(801) 252-7388

... Call daily and keep in touch with all the great and uplifting news about our #1 Unit!! Leave a message with your hot news too! Listen M-F for the month and receive a prize at the end of the month!

WEBSITE: <http://www.unitnet.com/kimsabourin>

... Sign the guest book daily and ... get to know your sister team members better!

LISTEN FOR A LIPGLOSS MARKETING HOTLINE: 641-715-3900 PIN 68763... Have anyone you want listen to the Mary Kay opportunity for a free lip-gloss from ME!!

WHAT'S UP EVERY WEEK

Mon **New Consultant Orientation @ Training Center 7:15-8:45**
Cheesecake & Choices @ Training Center 7:15-8:30
Bring anyone you want to share the MK opportunity with. Bring five guests to earn your "Pink Frost Ring" **NO CHILDREN PLEASE.**

Wed **"Extreme Team" Conference Call @ 9:00 pm with NSD Tammy Crayk!!** You must earn the right to be on this call by being On-Target, Free Car Driver, DIQ or on the Extreme Team the prior month. 712-432-0950 pin #

Sat **Saturday Morning Skin Care Class @ Training Center** Setup 9:00-9:45 Class time 9:45-12:00 Please bring a breakfast item that feeds 20-25 and a product giveaway

UPCOMING DATES TO PLAN FOR:

Jan 2 **Red Jacket Girlfriends Party @ Applebee's 8:30-9:30**
Jan 5 **Souper Bowl Party @ Training Center 5:00** for 100 Faces winners!
Jan 7 **X-tream Team 4:30-7:00 @ Tammy's**
Jan 17 **Layton Marketing event @ Jennifer Robbins house** 1837 N 440 W 6:00-8:00
Feb 4 **X-treme Team**
Feb 4 **Inner Circle Leadership Day**
Feb 6 **Red Jacket Girlfriends Party @ Applebees 8:30-9:30**
Feb 15 **Look Book Preferred Customer Enrollment deadline!**

\$1,000,000
\$990,000
\$980,000
\$970,000
\$960,000
\$950,000
\$940,000
\$930,000
\$920,000
\$910,000
\$900,000
\$890,000
\$880,000
\$870,000
\$860,000
\$850,000
\$840,000
\$830,000
\$820,000
\$810,000
\$800,000
\$790,000
\$780,000
\$770,000
\$760,000
\$750,000
\$740,000
\$730,000
\$720,000
\$710,000
\$700,000
\$690,000
\$680,000
\$670,000
\$660,000
\$650,000
\$640,000
\$630,000
\$620,000
\$610,000
\$600,000
\$590,000
\$580,000
\$570,000
\$560,000
\$550,000
\$540,000
\$530,000
\$520,000
\$510,000
\$500,000
\$490,000
\$480,000
\$470,000
\$460,000
\$450,000
\$440,000
\$430,000
\$420,000
\$410,000
\$400,000
\$390,000
\$380,000
\$370,000
\$360,000
\$350,000
\$340,000
\$330,000
\$320,000
\$310,000
\$300,000
\$290,000
\$280,000
\$270,000
\$260,000
\$250,000
\$240,000
\$230,000
\$220,000
\$210,000
\$200,000
\$190,000
\$180,000
\$170,000
\$160,000
\$150,000
\$140,000
\$130,000
\$120,000
\$110,000
\$100,000
\$90,000
\$80,000
\$70,000
\$60,000
\$50,000
\$40,000
\$30,000
\$20,000
\$10,000
\$5,000

YTD RETAIL

January wholesale Production as of TODAY 12/26/11	Wholesale Goal: \$40,000	New Consultant Goal: 25 Current New Consultants:	YTD Seminar Qualified New Team Members	Current # of Unit Members	Seminar YTD Retail Production	Days Left
\$629	\$39,371	0	15	298	\$293,951	30